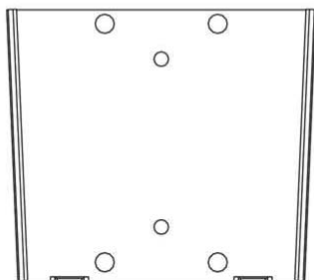


## Quick Mount LCD Monitor / TV Kit

Wall Plate



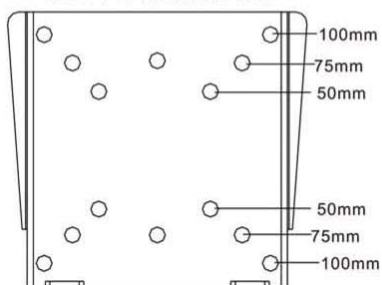
Use the  $2\frac{1}{4}$ " wood screws, mount the wall plate to wall stud or use enclosed sheet rock mollies



Note: Bracket is intended for use on LCD monitors up to 30kg

**Front**

LCD TV / Monitor Plate



Use the  $\frac{1}{2}$ " bolts, mount the monitor plate to back of monitor, (Note corners holes to accommodate both 75mm or 100mm VESA systems)

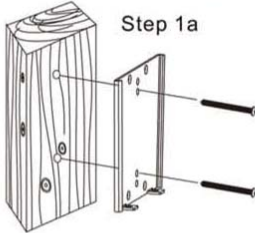


Use the  $\frac{1}{4}$ " bolts to lock and secure your monitor in place

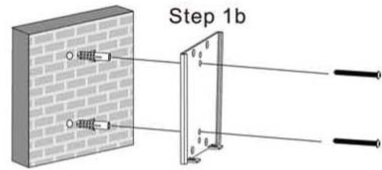


VESA® is a registered Trademark of the Video Electronics Standards Association

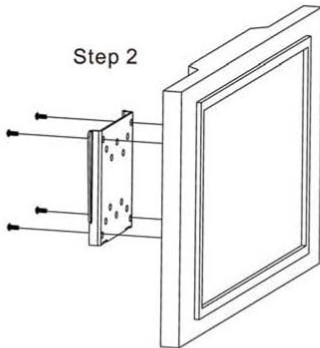
## AS Easy as 1,2,3!



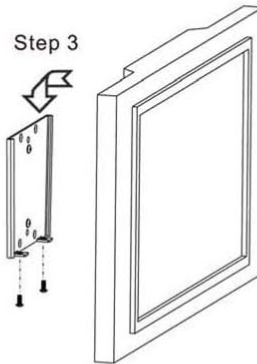
Using the  $2\frac{1}{4}$ " wood screws, mount the wall plate to **wall stud**



Pre-drill these mounting holes with a 8mm masonry bit to an least 50mm in depth.  
Using the  $2\frac{1}{4}$ " wood screws and concrete anchor mount the wall plate to **wall**



Using the  $\frac{1}{2}$ " bolts, mount the monitor plate to back monitor, Depending on your monitor, Use the 75mm or 100mm pre-drilled holes



Simply slip your monitor onto your wall mount, and secure with  $\frac{1}{4}$ " locking bolts from below, and you are finished! Enjoy!

## Back

VESA® is a registered Trademark of the Video Electronics Standards Association